

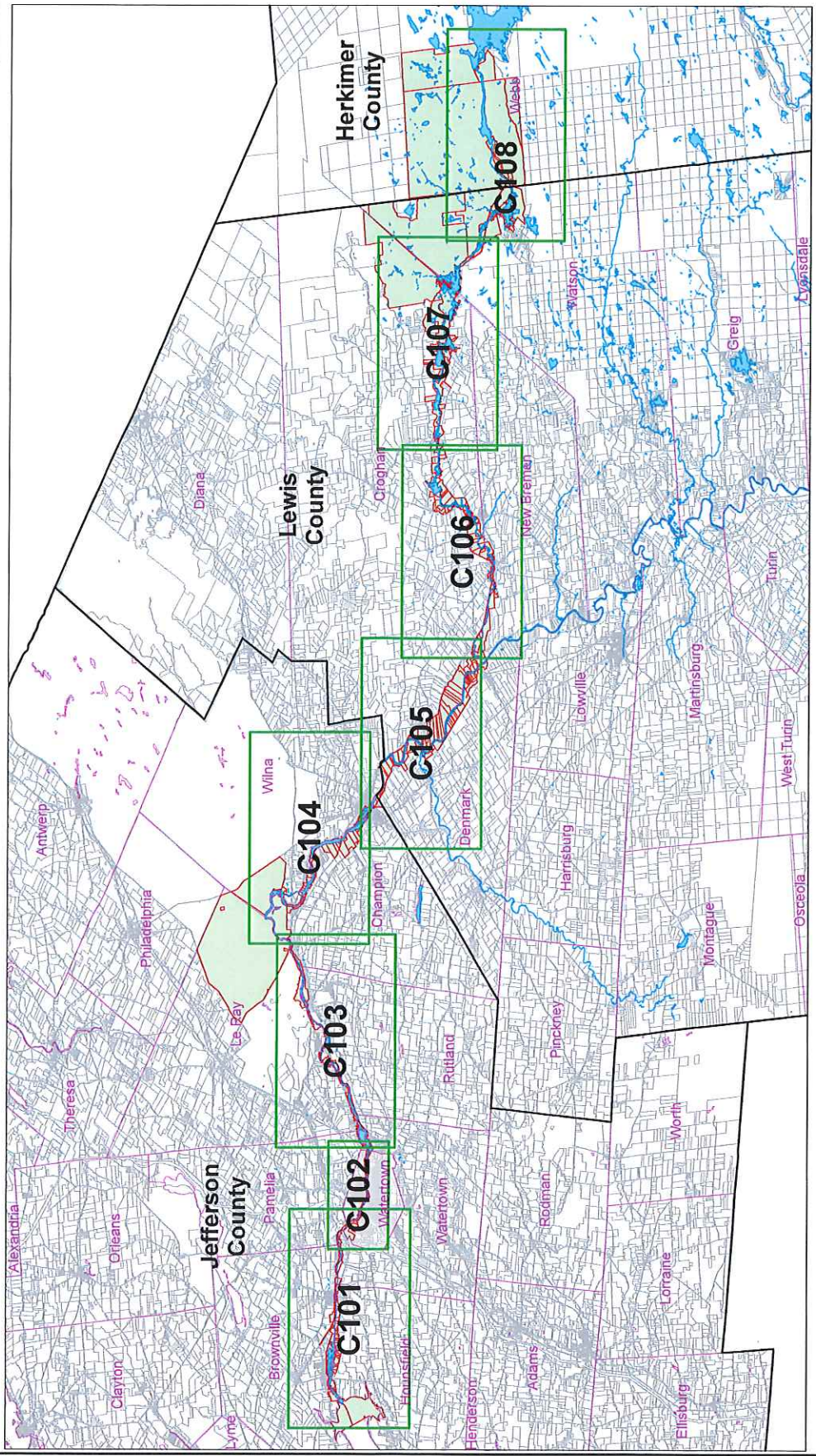
USGS
science for a changing world

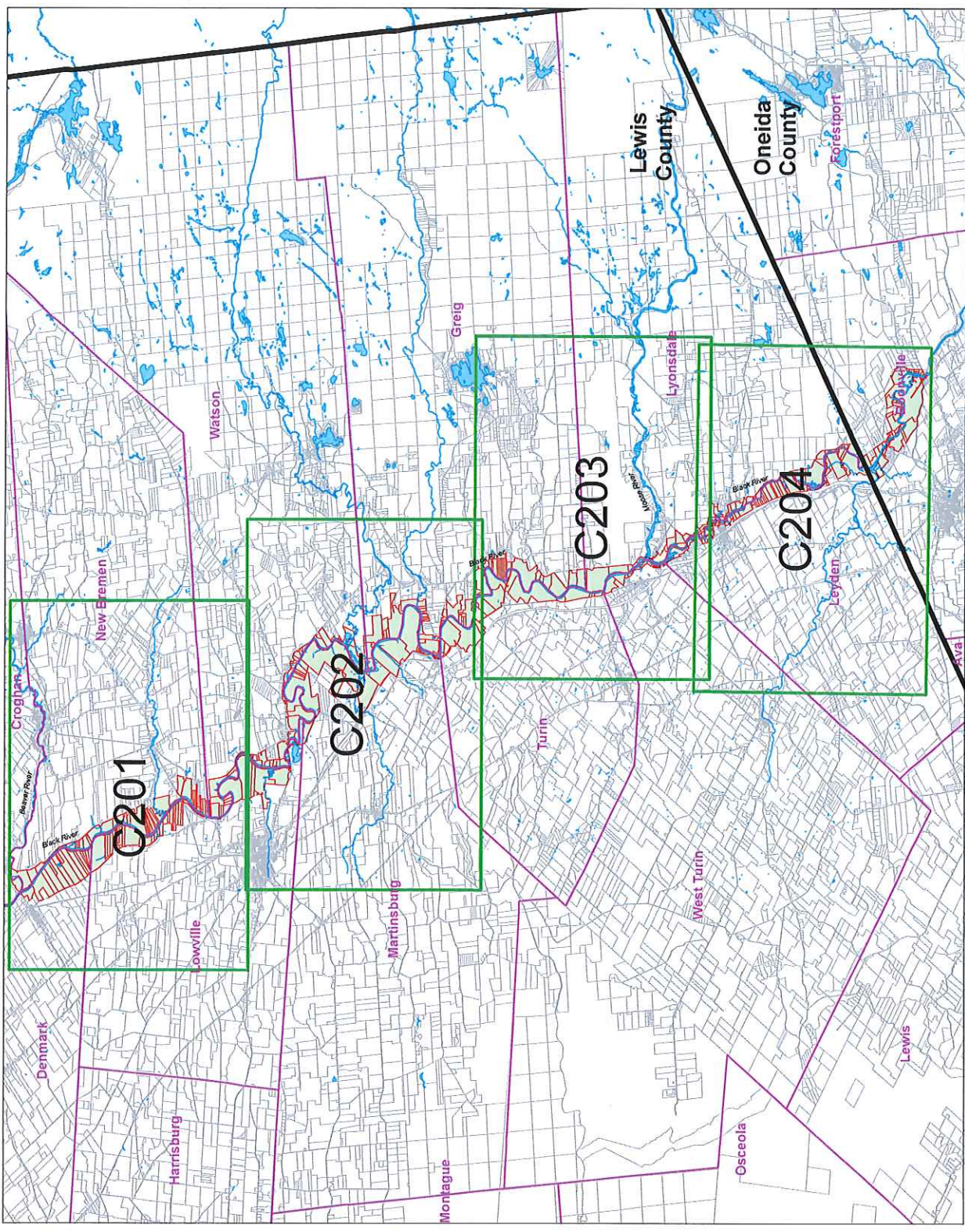
Watershed map courtesy of USGS
for the Hudson River - Black River Regulating District
March 2008

Base from U.S. Geological Survey digital data, 1:2,000,000,
Universal Transverse Mercator projection, NAD83, Zone 18

NO.	ITEM	DATE

CHK BY	DCC	DWG. BY	DATE







**HUDSON RIVER BLACK RIVER
REGULATING DISTRICT**
GIS MAPPING PROJECT

NO.	ITEM	DATE

REVISIONS

SHEET TITLE:
**SECTION 3
KEY PLAN**

SHEET NO.
C300

